



The Development Bar

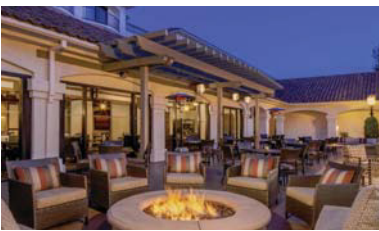
# Statement of Qualifications 2021

Published: April 21, 2021



**US Office:**  
5200 Clark Ave. Unit 4053  
Lakewood, CA 90711  
**c** +01 323 445 2420  
**t** +01 800 656 8705 x-521  
**e** admin@developmentbar.us  
**w** www.developmentbar.us

# Company Profile



## *Our Mission:*

*The Development Bar, Inc. is dedicated to providing quality building and construction, specialized management and technical services to our clients.*

Established in 1972 as El Senoussi & Associates, Inc. In order to expand its market, the company underwent a market extension merger and became an associate of Bar International Design & Development, Inc. After the Pandemic hit in 2020, the company restructured, Helmi El Senoussi semi-retired and became an independent consultant on the management team for The Development Bar. Inc.

Together, The Development Bar and its affiliate companies, are a multifaceted company specializing in commercial, industrial, and the government sector of construction, and real estate development with skillsets ranging from General Construction to project feasibility and studies, along with pre-construction documentation. The company has inhouse designers that work alongside designers, architects, and engineers on multiple projects.

We are headquartered in Los Angeles, California.

The Development Bar is defined by its people - honest, experienced, forward-thinking, professional and hard-working. Team members form collaborative relationships with owners, developers, design teams, subcontractors and others to assist in delivering the most desirable and economical solution to the construction goal, reinforcing the company's reputation for superior workmanship and performance.

Our business philosophy is dedicated to trusting relationships, excellent service, with workmanship that has enduring character and meeting and exceeding customer expectations every time. We have multiple divisional officers and team members who share in the company philosophy of complete customer satisfaction.

The Team completes many smaller projects each year, but specializes in delivering large-scale projects with difficult tasks, conditions and schedules. We execute projects through a variety of delivery systems, ranging from traditional contracting arrangements to turnkey design-build as Subs or GC project execution.



Architecture ■ Project Planing & Development ■ Site Development ■ Engineering ■ Construction

# Introduction

We provide the following services:

- Pre-Construction Services
- Traditional General Contracting Services
- Design Build Services
- Single Source Design, Engineering and Construction Services
- Construction Management Services
- Specializing in the application of cutting edge technology from start of the art mechanical systems, solar power and LED lighting, intergraded into seamless balance between architecture design and producing revenues
- High End Construction & Renovation Work
- Custom Residential Estate Services
- Hotels, Casinos, Conference Centers, Specialized Construction
- Remedial Demolition - Complete Building, Selective and Hazardous
- Site Development, Excavation, Site Work & Underground Utilities

Bar has consistently performed at high standard of excellence and customer satisfaction. We understand the many complexities and dynamics associated with the successful completion of any project and bring a unique team approach and knowledge base to solve the most complex undertaking with necessary speed and efficiency, on-time and in-budget. Our performance has resulted in a proven record of integrity and value to our most important resource, our clients.

With over 40 years of experience, knowledge and imagination, we've assembled a team of highly skilled, reliable and conscientious craftsmen and subcontractors who are committed to building with integrity. We are open to new, inventive styles and solutions and work with our clients in a very collaborative way. A lot of the fun in our business comes from challenges and discovery. We don't just build the same thing over and over again and we enjoy building creative, beautiful and functional spaces.

## INSURANCE WHILE ON A PROJECT

We are fully insured. All of our equipment is completely insured, contributing to peace of mind in both the company and customer when contracting a building project. We carry Wrap-Up insurance, up to 10mil. aggregate, Course of Construction Insurance that covers the structures being built, and Directors and officer's liability. This protects the owner, the contractors and subcontractors.

## LICENSES

We are licensed contractors in the State of California, but have acces to licensed affiliates nationally.

## SAFETY AND TRAINING

Bar is committed to Safety above all else and our team is a highly conscientious and skillful workforce. Our safety record attests to our commitment to the health and well-being of all who enter the construction site. Bar places a high emphasis on safety, is fully committed to maintaining a safe and qualified workforce, but also demonstrates dedication to completing each project in a timely and efficient manner. In addition to this, all of our management staff and employees currently have OSHA 10 certification which further contributing to our client's peace of mind.

# Consulting Partners



**KPMG** - we work closely with KPMG on pre-construction and commercial due diligence, including market study and financial analysis as required for internal planning purposes on large commercial projects.



**Water Technology International** - We collaborate and work alongside WTI on projects that include indoor or outdoor, Olympic pools, custom water parks or any aquatic sustainable entertainment development, working with 3D AutoCAD Revit to deliver documents using full BIM technology.



HNEDAK BOBO GROUP

**Hnedak Bobo Group** - HBG is a top ranking gaming and hospitality design firm that we call on as consultants, at times taking on roll of executive or design architects on some of our casino/hotel projects. Because of our past and current project collaborations, we've formed a unique relationship.



**HKS** - HKS is one of the largest architectural firms in the United States. In the past we have drawn on their expertise in conceptualization and design in hospitals and medical facilities. They have recently partnered and consulted with us on a project in the South Pacific.



**Global Health Services Network** - (GHSN) is an international hospital planning, commissioning and management company that works closely with HKS. We have collaborated for years on projects that are ongoing. On our current project in the South Pacific they recognized hospital operators.



**JLL**- JLL is a financial and professional services firm that specializes in commercial real estate services and investment management. The only real estate firm on CR Magazine's list of Best Corporate Citizens 2007, 2009 and 2012. Our relationship with JLL goes back many years. We call on their global expertise to assist in management of large development projects internationally.



**Sprung**- we work closely with Sprung when the job calls for a tensioned membrane structures that withstands extremely high winds and shows a remarkable resistance to earthquakes. Their sophisticated patented tensioning system combined with superior quality membranes and extruded aluminum substructure ensures a durable finished product that dramatically outperforms any product of its type in the world.



Architecture ■ Project Planing & Development ■ Site Development ■ Engineering ■ Construction

# Our Services

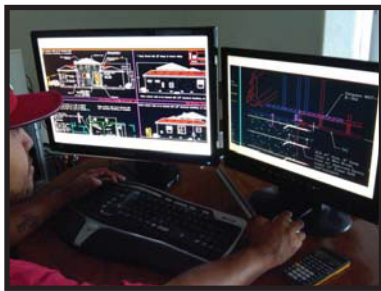
## Management PRE-CONSTRUCTION



**Design Team Meetings-** Our pre-construction services ensure maximum return on investment and include planning and coordination, procurement, estimating, scheduling, value engineering, constructability reviews and permitting. Along with engineers on our staff, we crowd source on large projects to bring a unique team of experts together that is geared towards project success.



**Planning Commission Meetings-** For Land Use, Zoning & Entitlement in Real Estate Developments we often times attend local government city council and planning commission meetings to represent our clients project and answer any questions pertinent to the project regarding, ie.- Design Review Hearings, Allowed Use Permits, Planning Commission Variance Requests, Zoning Variances, City Council Appeals.



**Construction Documentation-** Building Information Modeling (BIM) is changing how buildings, infrastructure, and utilities are planned, designed, built, and managed. We use Autodesk BIM solutions, the latest version of Acad, Revit, 3dStudio Max, Sketch-up Pro, and engineering software, to make sure we deliver the best quality work to our clients.



**On-Site Management-** We are always directly involved with all of our projects on a management level. We have construction managers involved in personnel management at the construction site. We also provide project management services and oversee all elements of a project, which may include manufacturing, construction and marketing, oversee the administrative needs of the project, including budgeting, funding, planning and expediting tasks.



Architecture ■ Project Planing & Development ■ Site Development ■ Engineering ■ Construction

# Our Services

## Residential CONSTRUCTION



**High End Homes-** Custom Builds, remodels, additions, and joint venture. we are an experienced real estate development and construction firm that builds beautiful high-end custom homes.



**Architecturally integrated lighting-** We create custom lighting solutions that will instantly shape the moods of friends and strangers. Our work can build excitement or relax your guests, and instantly communicates the feelings you want them to experience and associate with any space.



**Affordable Housing Projects-** We've built hundreds of units of housing over the years, Bar has extensive residential experience to draw from as we assist clients in pre-construction and manage the construction process efficiently. Our residential projects over the years has ranged from single family residential, townhouses to mid-rise apartments to high-end condominiums.



**Foundations of quality-** Almost all single-family home foundations in the U.S. are built with concrete or masonry blocks or some close variation, such as precast concrete panels or insulated concrete forms.

Regardless, a new home has one of the following three types of foundations:



Slab. A slab foundation is a lot like it sounds: a monolithic, horizontal block of poured concrete. The slab is usually supported by relatively shallow perimeter footing that runs along its entire boundary just below the ground. The center of the slab rests on or is embedded with a steel mesh over well-compacted and level ground. No matter the type, Bar has built many conventional and unconventional foundations engineered for all types of soil conditions. If we are building outside the U.S. and concrete is limited in supply or quality, we utilize our resources to build a batch plant on or near the project site.



Architecture ■ Project Planing & Development ■ Site Development ■ Engineering ■ Construction

# Our Services

## Commercial CONSTRUCTION



**Steel Buildings-** We work with some of the leading manufacturers for metal buildings, steel buildings, pre-engineered buildings, hybrid buildings, structural steel, and metal building components including metal roof and wall panels, accessories, trim and componentized metal buildings. Offering the highest quality in manufacturing and engineering.



**Subdivision tract houses/Luxury Apartment-** We have framed many of these types of planned developments and understand the logistics involved with planning, ordering materials, scheduling, and delegating the workload to an experienced group of subcontractors.



**Sprung Structure-** We have erected and built up many of these structures. We are familiar with the entire building system. The Sprung structure is an engineered stressed membrane structure, the result of more than three decades of research and development. It is constructed of extruded aluminum arches, integrally connected to an all-weather outer performance architectural membrane. This specialized membrane is certified flame-retardant.



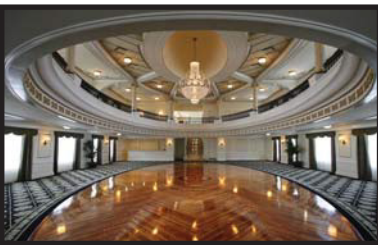
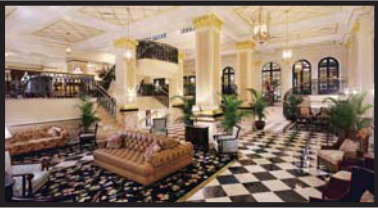
The Structures are engineered to withstand high wind loads of up to 150 mph, designed to shed snow, can be a temporary structure, or last for 25 years. With over a century of experience, Sprung delivers the most reliable, versatile and technically advanced structures available in the world.



Architecture ■ Project Planing & Development ■ Site Development ■ Engineering ■ Construction

# Our Services

## Hospitality CONSTRUCTION



**Historic Renovations-** Historic hotels often hold prime locations and exude character that distinguishes them from new-build hotels. Renovating older properties can even lead to economic benefits through grants or tax abatements. But the renovation and upkeep of these hotels requires enormous planning and patience. We have many years of experience in this type of renovation.

**Restaurants-** Bar has the extensive experience required for fine restaurants, commercial dining areas and bars. Construction is not only heavy duty steel and concrete. In fact, restaurants and bars require many of the same finishes as high end residential properties

**Custom Commercial Kitchens-** Our experience in foodservice equipment, installation and administration, help expedite projects to completion. Along with the building envelope, we specialize in design, specification, purchasing and installation for all your foodservice equipment needs. Complete kitchen build out, and remodels.

**Ford Harrison Project:** Custom Ballroom Renovation.

Bar also does pre-development, design, and build hotel projects from conception to completion.

**Hospitality & Casino Upgrade-** A Casino looking at making the gaming floor more open and inviting for guests, or looking to add more amenities, including restaurants and upgrading current food and beverage offerings. Because of our extensive experience in this niche market, we understand the overall goal of enhancing the guest experience.



Architecture ■ Project Planning & Development ■ Site Development ■ Engineering ■ Construction



# Our Services

## Design Architectural Design



Custom Home Rendering- Los Angeles, California

Our development team has designed and work alongside many design principals. We have the knowledge and resources with associates that have worked on projects past and present, like:

•**SAMOA HOTEL /CASINO RESORT DEVELOPMENT**

Apia, Samoa – 2012 / Present Pacific Island Management

•**GUGGENHEIM MUSEUM**

Abu Dhabi – 2008 / 2011 Gehry Partners

•**BROOKLYN ARENA**

Bk, New York – 2003 / 2008 Gehry Partners

•**BROOKLYN ATLANTIC YARD-Master Plan**

BK, New York – 2003 / 2008 Gehry Partners

•**ATLANTIS SENTOSA**

Sentosa Island, Singapore 2006

Gehry Partners/Arnell GP/ Greg Lynn Form

•**PUENTE DE VIDA**

Panama City, Panama 2000

**TDIC** (Tourism Development and Investment Company)

A 15 hectare museum located in Saadiyat island which utilized most of its spaces for art and creativity and other spaces to education, a restaurants, a theater, and retail. Design documentation and organization.

**Forest City Ratner**

The Brooklyn Arena project comprised of a basketball arena and four towers within the Brooklyn Atlantic Yards master plan. My area of concentration involved Tower One (nicknamed Miss Brooklyn).

**Forest City Ratner**

The Atlantic Yards is a master plan within the borough of Brooklyn, New York. The master plan comprised of 16 buildings with a range of use from offices, hotel, apartment, retail, and a basketball arena.

**Kerzner International, Capital Land**

40 hectare Resort comprised of a variety of imaginative program which involved an aquarium, robo-tanical garden, theater, private-single family housing, hotels, offices, a port for cruise liners, restaurants, and waterpark.

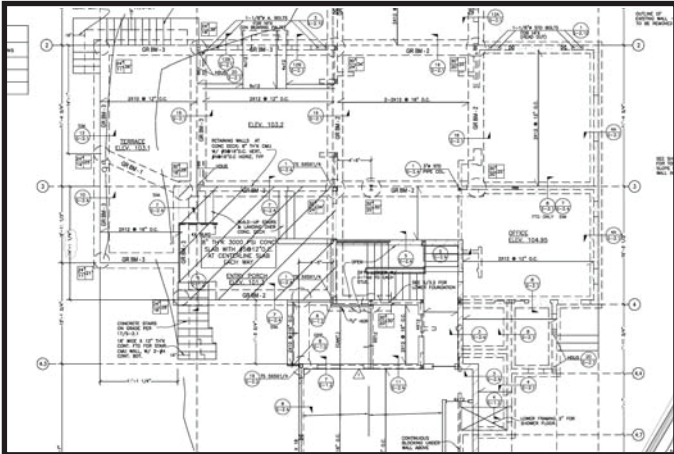
**Fundacion Amador**

Described as the Museum of Bio-diversity the architecture helps describe the formation and relationship between the geographic effects to its inhabitants.

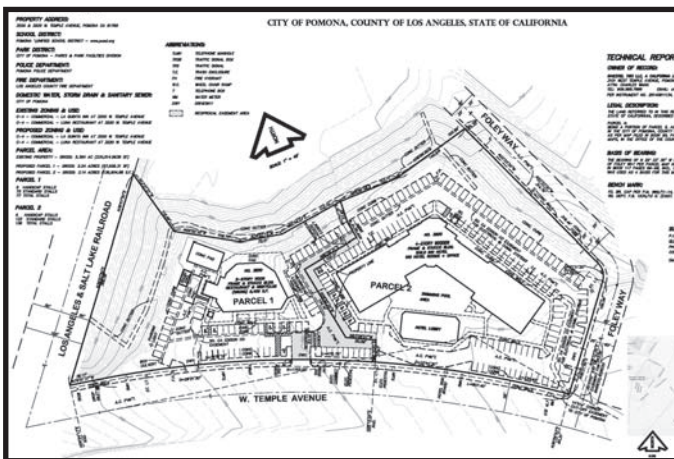


# Our Services

Engineering Civil Engineering  
Land Survey



Structural



tentative tract map



Land Survey

With our engineering partners working along with our design we have the ability to engineer your project from start to finish.

Our Services Include:

## Structural Engineering

Our Structural Engineers create drawings and specifications, perform calculations, review the work of other engineers, write reports and evaluations, and observe construction site work.

**Civil Engineering-** Our Civil Engineers design and perform calculations and design for construction of public works, such as dams, bridges and other large infrastructure projects. We have in house engineers on staff and others that we contract with.

**Land Survey-** Our selected surveyors are second to none. They perform tasks like establish land maps and boundaries for ownership, locations like building corners or the surface location of subsurface features, using advanced equipment such as total stations, robotic total stations, GPS receivers, prisms, 3D scanners, radios, handheld tablets, digital levels, and surveying software.



Architecture ■ Project Planning & Development ■ Site Development ■ Engineering ■ Construction

# Representative Clients

Construction

Engineering

Civil Engineering

Land Survey

& Design

SELECT PRIVATE CLIENTS

Walt Disney Company  
Warner Bros. Entertainment, Inc.  
Paramount Pictures Corporation  
Pepperdine University- Malibu  
American Jewish University  
Tom Cruise- American Actor  
George C. Scott- American Actor  
Armin Mueller-Stahl- American Actor  
Julie Andrews- American Actor  
Ward Sylvester- American Producer  
Arnold Schwarzenegger- American Actor  
Barbra Streisand- Singer Songwriter  
Hollywood Directors and producers (nba)  
Church of Scientology  
Warwick Hotels International  
Hilton hotels  
Startwood Hotels & Resorts  
Geltel (now Verizon)  
Flying Tiger Restaurants  
Hard Rock Hotel & Casino  
Nantucket Light Restaurants  
Alice's Restaurant Malibu  
Whiskey a go go  
Troubadour- West Hollywood  
Alexander Henry fabrics International  
International Helm's Bakery  
Lords Clothing international  
Planet Hollywood  
Cold Stone Creamery  
Waterlot West  
Hyatt  
Miyako Hotels  
Terry Huier Investment Group  
Sprung Structures  
Chevron

- Due to Non-Disclosures, and the confidential nature of our selective Public Works, Civil Engineering, and Land Survey Projects, a list can be generated upon request directly from our engineers at their discretion.



Architecture ■ Project Planing & Development ■ Site Development ■ Engineering ■ Construction

# Project Experience

CONSTRUCTION



Project Value:  
\$47 Million

Owner:  
The Church of Scientology  
Completion Date: 2008

This project was a total **renovation** of the historic Fort Harrison Hotel, located in Clearwater, Florida. It is owned and operated by the Church of Scientology Flag Service Organization, Inc.

This project was for the complete **turnkey build** of the faculty and student housing for the university located in Los Angeles, California



Project Value:  
\$10 Million  
Owner:

The University of Judaism  
Completion Date: 1984

Project Value:  
\$5 Million

Owner:  
Ward Sylvester  
Completion Date: 2000



This project was for the complete **turnkey build** of a custom luxury home located in Los Angeles, California, for Ward Sylvester, who is an American entertainment industry producer, manager, promoter, executive and consultant. He has served as President of Pacific Arts Inc., and Personality Productions; Vice President of Columbia Pictures TV and Metro-Goldwyn-Mayer.

# Project Experience

CONSTRUCTION



Project Value:  
\$3.6 Million

Owner:  
Nabeel Jaber of Lords  
Completion Date: 2007

This project was for the complete **renovation** of the original Hamburger Hamlet building that was built in the 1950's. The Facelift was for a more modern contemporary look and change of occupancy for Nabeel Jaber of Lords, a Los Angeles based fashion and clothing designer.



Project Value:  
\$2.45 Million

Owner:  
Terry Huier - Investment Group  
Completion Date: 1985

This project was for the **Pre-development and build** of a medical office building located in Westlake Village for Terry Huier Investment Group

Project Value:  
\$6.8 Million

Owner:  
The Church of Scientology  
Completion Date: 2009



This project was for the complete **renovation** of the entire Dallas Fort Worth Church of Scientology Metroplex located in Irving, TX. The upgrade was done to the outside and complete interior remodel.

*Architecture ■ Project Planing & Development ■ Site Development ■ Engineering ■ Construction*

# Project Experience

CONSTRUCTION



This project was a **remodel** of the Hard Rock Hotel & Casino located in Tampa, Florida

Project Value:  
\$4 Million

Owner:  
Hard Rock Hotel & Casino  
Completion Date: 2010



This project was for the complete **remodel** of the historic Oak Cove Hotel located in Clearwater, Florida

Project Value:  
\$3 Million

Owner:  
Warwick International Hotels  
Completion Date: 2012

Project Value:  
\$38 Million

Owner:  
The Church of Scientology  
Completion Date: 2008



This project was for the complete **build** of the largest conference center in the South Pacific located at Warwick Le Lagon Resort & Spa. Built with a high rated sprung and build-outs.

# Project Experience

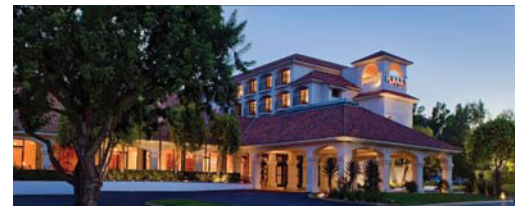
CONSTRUCTION



Project Value:  
\$2 Million  
Owner:  
Ford Harrison  
Completion Date: 2008

Complete Commercial Kitchen planning, design, and installation **remodel** of the Hibiscus Restaurant in the Fort Harrison Hotel in Clearwater, Florida.

This project was for the complete **build** of the Hyatt Westlake Village.  
This was a 263 key hotel build.



Project Value:  
\$6 Million  
Owner:  
Hyatt Westlake Village  
Completion Date: 1986

Project Value:  
\$2.45 Million  
Owner:  
Waterlot West  
Completion Date: 1985



We **built** the original 12, 000sq. ft. Waterlot Restaurant in Westlake Village, California.

Architecture ■ Project Planing & Development ■ Site Development ■ Engineering ■ Construction

# Project Experience

CONSTRUCTION



Project Value:  
\$1/2 Million

Owner:  
Hibiscus - Church of Scientology  
Completion Date: 2008

This project was for the complete **remodel** of the Hibiscus Restaurant dining area to a Mediterranean decor. Located in the Fort Harrison, Florida.

This project was part of the **remodel** of at the Warwick Le Lagon Resort & Spa located in Vanuatu



Project Value:

Owner:  
Warwick International Hotels  
Completion Date: 1986

Project Value:  
\$1 Million

Owner:  
Miyako Hotels  
Completion Date: 2000




This project was for the renovation of the complete lobby area, Restaurant, and front entrance mullion and glazing system for the Miyako Hotel in Los Angeles, California.



# Past Projects 2016

CONSTRUCTION/PRE-DEVELOPMENT/MANAGEMENT

## Samoa Grand Island Resort




Project Value:  
\$1 Billion  
Owner:  
Pacific Island Management Corp.  
Completion Date: On Gov. Hold

The Samoa project proposes a world class Hard Rock Hotel & Casino which will be located in Upolu Samoa, Mulifanua. The proposed Samoa Grand project will be set upon a 200 acre seafront location leased by PIMC .The proposed project also includes a medical facility with a 200 bed hospital. The project also includes a multi-sports stadium, retail shopping center, custom luxury time-share development, a water park, and an emergency response center.

Location: Upolu Samoa, Mulifanua

Project Manager: Michael Burke

## Life City Cancer Center



Project Value:  
\$386 Million  
Owner:  
Collins Development Group  
Completion Date: In Process

Life Centre Wollongong will be Australia's largest integrated, holistic and hi-tech medical healthcare campuses. The headline facility will be a paperless, tertiary level hospital providing everything except an ER and obstetrics (child birth). The treatment of chronic illnesses and sports medicine will be our primary focus, with specialty cancer treatment as a key theme. The project proposes a 320 bed tertiary level hospital, a primary care and holistic treatment center, surgery and specialist center, senior living complex(s), resident care facility and hostel.

Location: Berkeley Wollongong, Australia

Project Manager: Michael Burke

## Welch Custom Home Proj.



Project Value:  
\$ 400k  
Owner:  
Estrada / Welch  
Completion Date: In Process

The Welch residential project is for a custom 3 story modern contemporary home with postmodern features. This custom design house is a design/build project located in Los Angeles, California that boasts 13'-14' ceilings and an open floor plan with a four car garage, two balconies, and a 1,000sq. ft. master bedroom.

Location: Los Angeles, California

Project Manager: Michael Burke



There are other projects in our pipeline that are in the business development stages and are somewhat sedentary. For further status regarding those projects, please contact us directly for additional information. Project names;

- Alden Leiyр Lighting / Sony Picture Studios Proposal
- Med Fitness / Medical-Fitness Speed & Agility Sports Facility
- Hi-q Education Program Development

# Project Specialty **Focus**

GOLF COURSE

In recent years, on all of our development projects that includes a golf course along with hotel and community structures, Bar calls on the expertise of David and his team.

Members of The American Society of Golf Course Architects and American Society of Landscape Architects, with over 80 courses designed, master planned, or remodeled. This amazing team has joined with Bar's ability in commercial real estate development to form a unique relationship.



David A. Rainville  
ASGCA Fellow



Gary Bye  
ASLA

### Select Course Portfolio

Castle Pine Country Club  
Seoul, Korea

Mile Square Golf Course (Players Course)  
Fountain Valley, Calif.

Yucaipa Valley Golf Club  
Yucaipa, Calif.

Eagle Crest Country Club  
Escondido, Calif.

The Vineyard at Escondido  
Escondido, Calif.

Desert Princess Country Club  
Cathedral City, Calif.

### Remodeled/Renovated Courses

Montebello Country Club  
Montebello, Calif.

Mile Square Golf Course (Classic Course)  
Fountain Valley, Calif.

Alta Vista Country Club  
Placentia, Calif.

Los Verdes Golf Course  
Rancho Palos Verdes, Calif.

San Clemente Golf Course  
San Clemente, Calif.



Whispering Palms  
Rancho Santa Fe, CA



Castle Pine Golf Club  
Seoul, Korea

# Key Personnel

## MANAGEMENT



**HELMI EL SENOUSI** (Project Specific Consultant)  
El Senoussi & Associates

Tel: +01 805 368 3224  
Office: +01 800 656 8705  
Email: h\_elsenoussi@bar-usa.com  
Email 2: helmi@developmentbar.us.



**ROBERT PHLONG** (Contractor - GENERAL MANAGEMENT)  
Principal

Tel: +01 562 234 2257  
Office: +01 800 656 8705 EXT 105  
Email: rbt@developmentbar.us



**ERICK ESTRADA** (GLOBAL MARKETING & DEVELOPMENT)  
Associate

DIRECT: +01 951 427 8111  
TEL: +01 877 329 1545  
Office: +01 800 656 6705  
Email: erick@developmentbar.us



**NICHOLAS MYERS** Outside (Legal Counsel)  
Principal - Myers Berstein, LLP

Direct 1: +01 949 825 5590  
Email: nicholas@mybelaw.com



**MICHAEL BURKE** (OPERATIONS DIVISION)  
MANAGEMENT

Direct 1: +01 323 445 2420  
Office 2: +01 800 656 8705 EXT 101  
Email B/U: mikeburke.pm@gmail.com  
Email: mike@developmentbar.us



# INSURANCE, FUND MANAGEMENT AND DISBURSEMENT CONTROL

## The Development Bar, Inc.

### *Project Characteristics – General funds management model*

March 4, 2021

---

Funds management, in particular, is an especially important issue for large-scale construction and design projects for Bar. Based on the unique business characteristics, management structures and products of large-scale construction, construction design and development projects, there are several options available that strengthen risk management.

- A. Bar is fully insured on all building projects. All of our equipment is completely insured, contributing to the peace of mind in both the company and client.
- B. Bar carries contractor-controlled **Wrap up insurance**, which is a blanket policy that provides risk protections for owners, contractors and subcontractors for projects that exceed 10 million dollars. Included in this insurance are workers compensation, general liability, excess liability, pollution liability (CPL), professional liability(PLI)(PII)(E&O), builder's risk, and directors & officers liability that protects the client, Bar, and our sub-contractors.
- C. **Subcontractor Default Insurance (SDI)**, this insurance is an insurance product that is utilized by Bar to manage subcontractor default risk. The placement of this insurance is complex. We have a strong relationship with Zurich. They are the leader in this coverage, through our broker. Zurich is a relationship driven carrier.

The most prominent policy on the market is Subguard, a product of Zurich Financial Services. Subguard was designed to address the needs of large general contractors, construction managers and design-build firms with annual subcontractor/supplier expenditures of \$50 million or more. Zurich's promotion of Subguard highlights the following:

- Completion costs for unfulfilled subcontractor or supplier obligations — including costs related to contractor replacement, job acceleration and extended overhead
- Correction costs for defective and/or nonconforming work product
- Legal costs resulting from a default

*Project Characteristics – General funds management model*

- Coverage for disadvantaged or small business enterprises that may have difficulty qualifying for standard performance and payment bonds
- Coverage for local and other business enterprises that may have difficulty qualifying for standard performance and payment bonds

D. To protect our clients funds on large scale projects we call on the pundit advise of Forcon International.

#### **WHO IS FORCON FUNDS MANAGEMENT, INC.**

Forcon Funds Management, Inc. (FFM) is a wholly owned subsidiary of Forcon Holding Company. Forcon Holding Company owns the Forcon family of companies with offices in the Tampa, Atlanta, Philadelphia, Richmond (VA), Raleigh (NC), and Grand Rapids (MI) areas.

The Forcon companies are multi-discipline consulting firms with extensive expertise and experience in the areas of surety, funds management, fidelity, property and casualty and accident reconstruction.

Forcon has trained and experienced professionals in construction, engineering, architecture, accident reconstruction, accounting, construction law and the bond claims industry.

Forcon is dedicated to minimizing financial losses in the construction industry, while maximizing prime contractor and subcontractor performance through the utilization of its Funds Control.

#### **CONCLUSION**

SDI provides a good alternative to performance bonds in many settings. The Development Bar would have more control and utilize its own resources to investigate subcontractors and suppliers and will benefit from the lower costs of default insurance rather than a performance bond. We believe that we are the best source to evaluate the strength of a subcontractor, based both on balance sheet factors and intangible qualities, and make key decisions about project participants based on project needs.

In furtherance, because of Forcon’s skillset in forensic accounting their fund management and disbursement system, along with proven track record and credibility, Bar has the consistency in achieving our client’s goals minimizing risk across the board, along with a vociferous focus on fund accountability.

Please feel free to contact me for any further information regarding this newsletter.



**Michael Burke – Project Management**

Facilitator | The Development Bar, Inc.

Direct Tel 323.445.2420 | Main Tel 800.656.8705 Ext 101

Email [mike@developmentbar.us](mailto:mike@developmentbar.us)

---

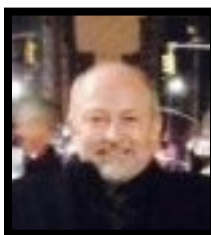


**Shahrad Nahai – Bar Building Division Insurance Placement**

Broker | Nahai Insurance Services, Inc.

Direct Tel 310.282-8863 | Main Tel 310.282.0900 Ext 238 | F 310.282.0976

Email [shahrad@nahai.com](mailto:shahrad@nahai.com)



**Mark Woodbury C.M.A. C.F.E. – Bar Building Division Fund Management Control**

Assistant V.P. at Forcon International Corp

Assistant V.P. | FORCON INTERNATIONAL CORP

Direct Tel 813.684-7686 1216 | F 305.654.1481

Email [mwoodbury@folcon.com](mailto:mwoodbury@folcon.com)

*The Development Bar 6/4/2021*

We are always working to



Maximizing the Effectiveness of Our Team



5200 Clark Ave Unit 4053  
Lakewood, CA 90711

P. +01-800-656-8705

Construction:  
[www.developmentbar.us](http://www.developmentbar.us)

Development:  
[www.developmentbar.us](http://www.developmentbar.us)

email: [admin@developmentbar.us](mailto:admin@developmentbar.us)

